



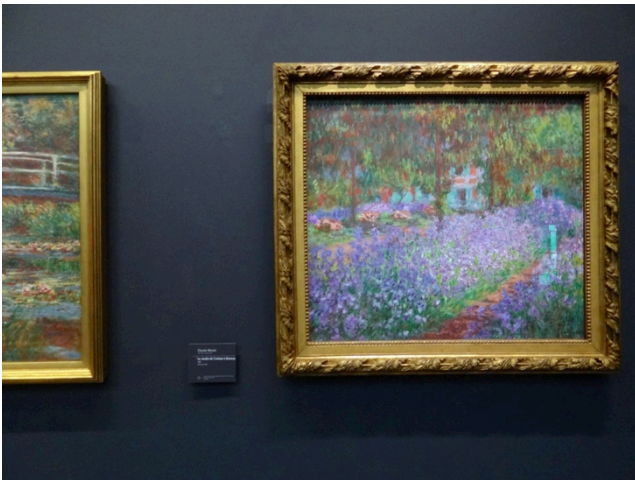
files

**Exchange Report Fall 2016**  
**BBA MARK & MGMT**  
**SHAO, Yanzi (Bessie)**

## Part 1. Monthly Activity Log

### September

I arrived in Copenhagen in mid August, a week before CBS official introductory activities. I used this time to get to know my roommate and the students in my dorm. My buddy picked me up from the airport, handed me the keys and showed me where my dorm was located. My buddy and his friends were very helpful and organized various activities for us during the semester. During the first few weeks, I visited many tourist places in Copenhagen with the university and with friends. I had 4 full quarter courses and my class timetable was consistent during the semester meaning that I could plan my trips easily. In September I visited Paris and Brussels.



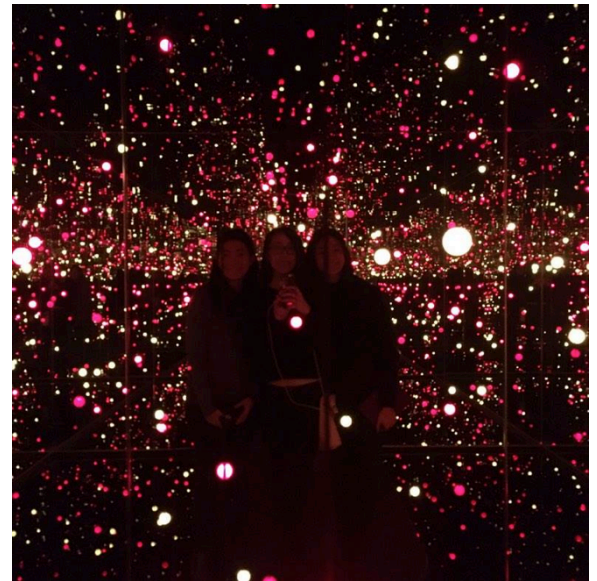
### October

In the beginning of October, my parents came to Copenhagen to visit so I spent a few days with them. A friend on exchange in Sweden also came to visit. In the middle of the October, I spent two weeks in Italy and visited Milan, Venice, Florence, Rome and Naples. I had no mid-term exams so I was pretty relaxed during this month. I did not buy a bike during my time in Copenhagen unlike many other students, as I lived near campus and did not want the hassle of trying to sell it in December. During this time Facebook groups are flooded with posts of students trying to sell their bikes. However, CBS recommends a company, which is guaranteed to buy back your bike at the end of the semester for a fixed price.



## November

In terms of schoolwork, I was much busier in November as I had group projects due at the end of the month. When working on group projects at school I recommend having lunches at CBS, they are reasonably priced and there is a wide variety of choice. The juices and milkshakes at SP are worth a try as they have interesting flavor combinations. There is also a place in Falkoner Alle called Forno a Legna selling decent pepperoni pizzas. The days will start to become shorter and shorter and the sun will eventually set at around 3pm so remember to use your day wisely. In November I visited Stockholm and Oslo. It is way colder in these cities compared to Copenhagen to be prepared to wear more layers!



## December

In the start to mid December I had my exams. I had 2 oral exams based on written project, a 72 hour take home essay and a 2 week take home essay. These counted for 100% of my final grade. The essays are straightforward and the oral exams are quite informal. In the oral exams they tend to ask similar questions on the content to every student. In preparation for Christmas, most of the supermarkets will start selling seasonal treats, if you like cinnamon a must try is pebernodder which can quickly become addictive. At the end of December I explored more of Copenhagen and went to Berlin, Munich and Prague. Before you leave remember to cancel your CPR (email will be sent by CBS).



My must visits in Copenhagen include Nyhavn, Church of Our Savior, Louisiana Museum of Modern Art and the Botanical Garden during autumn.

## Visa Procedures

I applied for my visa 3 months in advance, in end May and did not receive it in time like some other UST students. I recommend applying even earlier than end May if you want to receive it before you leave. It is fine if you hold HK passport and don't receive the visa before you leave as you can stay for 3 months. However, it can be very frustrating if you want to open a bank account as you need a CPR number, and you can only get a CPR after you get your visa and the CPR process can take more than 2 weeks as well. I eventually got my visa in the beginning of September, 3 weeks after I arrived in Copenhagen.

## Orientation Activities

I joined the second week of social activities. The Danish Folk dancing was definitely the most enjoyable activity and should not be missed. I would recommend joining at least one of the social packages. The exchange coordinators also offered a trip to Berlin and tour of Denmark.

## Accommodation

I lived in Kathrine Kollegiet in double room with a roommate from Australia. My first choice was Porcelaenshaven as the residence is only a few minutes walk away from main campus and there are common rooms. The housing application is very competitive, you must click the link at the exact time of the application opening and waste no time in reading all the rules. In my housing application when asked for a single/double room I chose no preference. My double room was huge compared to UST standards. There is a shared kitchen and bathroom between two people. When you arrive you will find a set of bedding and towels you have paid for, included in the rental fee. Before you do your laundry you will have to top up your laundry card online. Try and top up an amount you think you can use up during your semester as there is a credit card transaction fee every time you top up. Routers are not allowed in the KK dorm. If you do not receive a housing offer you should look for housing immediately, students usually have difficulty finding appropriate housing in Copenhagen.

## Courses Registration

Course registration is easy, straightforward and you will usually get the courses you want if you submit the form on time. CBS will send you an email regarding course selection and there will be two additional rounds if you would like to change your course selection.

## Teaching & Assessment Methods

There are usually a large amount of assigned readings each week. The exam format is usually 100% weighted on the final exam which can be a oral exam, sit-in exam or take home exam. When signing up for oral exam timeslots it is a good idea to take the exam earlier in the day so that you do not have to wait for such a long time. You MUST arrive early to oral exams! There is a fair chance that you may have clashes in your timetable, if this happens you can choose which class you want to go to as no attendance is taken.

## Sports & Recreation Facilities

There are sports activities on offer at CBS, more information can be found during the societies fair in September. There are two main gyms Fitness DK and Fitness World with a monthly fee.

## Finance & Banking (including currency / expenses)

I personally did not apply for a Danish credit card, I used my Hong Kong credit card as it had no international fees. Most students will open a bank account at Danske Bank or Nordea, Nordea does not have any account opening fees.

## Social Clubs & Networking Opportunities

There is a societies fair in the beginning of the semester where you can join various activities. Many of these societies hold events popular with exchange students. There is also a language buddy program which can be a great opportunity to improve your Danish. Danish students enjoy drinking, in CBS you will often find Nexus Thursdays to be very crowded. You can network at the CBS career fair however, these companies may only be looking students based in Denmark.

## Health & Safety

After applying for a CPR number you will receive a health card. In order to see the doctor, you must first make an appointment and there is usually few timeslots available. Copenhagen is a generally a very safe city even late at night. Avoid walking in bike lanes as this can really annoy bikers.

## Food

It is quite expensive to eat meals in restaurants. Traditional Danish food consists of a lot of meat, mainly pork and different types of meatballs as well as open-faced sandwiches and cinnamon buns. There is a strong café culture in Copenhagen, a popular café is Mad & Kaffe and there are many gourmet options like Noma. Affordable options include food trucks selling hotdogs and lunch buffets at Dalle Valle. I mostly cooked simple meals in my dorm including various pasta dishes. Sharing ingredients with roommates or hallmates is a great way to reduce expenses. The cheapest supermarkets are Lidl and Aldi. There are two large Fotex's near the main campus where Asian ingredients can be found at a higher price than in Hong Kong. You can bring a small rice cooker if you prefer.

## Transportation

The transport system is fast, easy to use and frequent. I find it even more convenient than Hong Kong's MTR as the metro in Copenhagen is 24 hours. This is handy if you need to arrive at the airport in the early morning to catch a flight. Do not forget to tap your metro card in and out in order to avoid hefty fines of 750 DKK. There are frequent checks by security on the metro especially during lunchtime.

## Climate

From September to October it is warm to chilly whereas from November to December it is cold to freezing. You should pack for all seasons. It does not usually snow in Copenhagen during the fall semester.

## Communication

Almost everyone in Denmark has perfect English. To learn Danish, you can take a Danish course at CBS or free Danish courses run by external organisations. Use the Lebara sim card provided by CBS and the 30GB phone plan.

## Items to Bring

Camera  
Portable Charger  
Financial Calculator- some courses in CBS require specific models so check with the course information first  
Cabin-sized luggage  
Lock  
Adapter  
Airplane Pillow  
Scarves  
Beanie  
Gloves  
Down Jacket  
Waterproof Jacket  
Warm Slippers  
Umbrella

Dress/Suit  
Formal Interview Clothes  
Flats  
Trainers  
Boots  
Vacuum Bags- very useful!!

Useful Links and Contacts:

For Courses: <http://www.cbs.dk/en/international-opportunities/international-students/guestexchange-student>

For Housing: Private housing coordinator: Catherine Layolle e-mail: [privatehousing.intoff@cbs.dk](mailto:privatehousing.intoff@cbs.dk)

Whenever you have a problem do not hesitate to contact the exchange coordinators at CBS, they are very helpful!

If you have any questions, you are welcome to get my contact details from the SBM office at [bmugexch@ust.hk](mailto:bmugexch@ust.hk) 😊