



EXCHANGEREPORT

COPENHAGEN BUSINESS SCHOOL, DENMARK

KRISTY CHAN

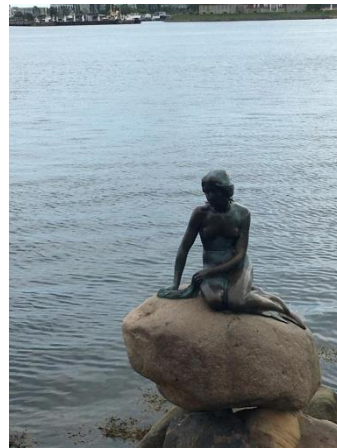
GLOBAL BUSINESS AND MARKETING, YEAR 3

FALL 2016

PART I – ACTIVITY LOG

End of August 2016

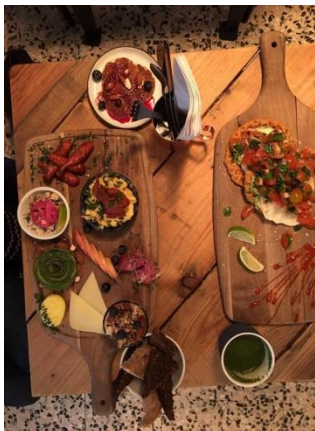
I arrived in Copenhagen after an exhausting long haul flight full of anticipation and excitement. I was picked up by my CBS Exchange Buddy and we headed to the flat I rented – my flat mates had all arrived a few days prior and had set up the house for us. I spent the first few days touring the city with my flat mates. I'd really recommend joining some of the free walking tours to get to know the city center a little more.



September 2016

The first 2 weeks before the semester began were full of orientation activities organized by CBS. The evening orientation activities are purchased separately but definitely worth it in order to meet and mingle with other exchange students. CBS also hosts a school party to start the semester – it's incredibly popular so I would recommend checking it out (just make sure you line up early).

As a flat full of Asians we celebrated Mid-Autumn festival together with a moon cake I brought from Hong Kong. The highlight of this month was really getting to know other exchange students and exploring the best places to eat and drink in Copenhagen.



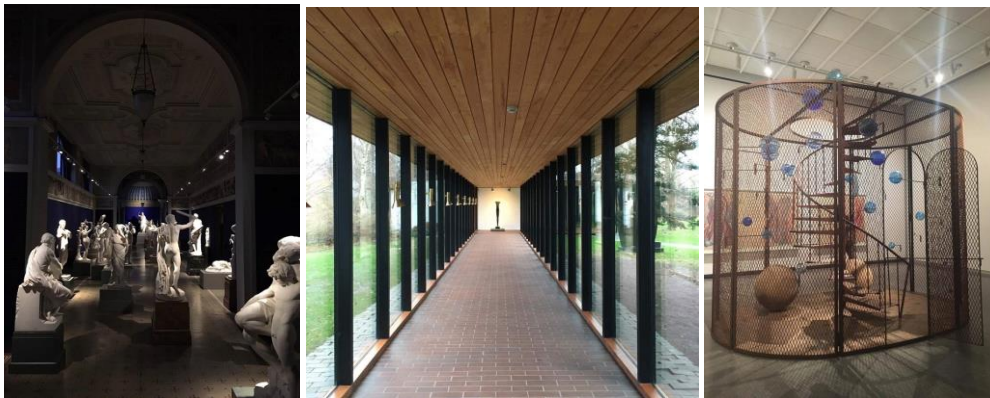
October 2016

October was the month of light traveling to other European countries. Copenhagen is situated in a pretty convenient location for popular tourist destinations. There are a lot of budget transportation options for students from budget airlines to budget buses and trains. It's incredibly easy to track any offers or discounts with mobile apps – EasyJet sometimes offers cheap seasonal tickets to specific locations. We also hosted several house parties and birthday parties in our flat and invited a lot of exchange students over. An Italian student even tried to teach everyone to salsa!



November 2016

Depending on class choice, some students had some final exams during this month. I also spent some time visiting some local museums like Glyptoteket and the Louisiana Museum of Modern Art – I would really recommend the latter! I also saw the Christmas light show at Tivoli which was really pretty! If you have some time during the weekends, I'd also suggest taking a weekend/day trip to Malmo in Sweden via bus.



December 2016

This was the month of final examination so I was busy with revising and celebrating Christmas. We bought a Christmas tree for the flat and decked out our flat with Christmas décor! After exams, I spent the remainder of the semester travelling across Europe.



PART II – GENERAL EXCHANGE INFORMATION

Visa Procedures

There isn't a Danish Consulate in Hong Kong so one must head to the nearest Consulate in Guangzhou to complete visa application. There will be multiple forms to fill out but CBS will provide all relevant details and information by email. Make sure to double check the webpage of the Consulate for information in regards to the documents and fees you need to prepare for prior to your arrival at Consulate for photo registration. I'd recommend applying for your visa as soon as possible – I waited for almost 3 months for mine as it was peak season.

Orientation Activities

CBS offers 1 week of compulsory activities that all exchange students must attend as well as 1 week touring package prior to this that you can purchase. There is also a package for night time activities (Exchange Social Package) you can purchase during your week of orientation that I highly recommend – it is a little pricey though so beware!

International Services & Activities

Like the Exchange Buddy program at HKUST, CBS also automatically pairs you up with a student at CBS who will guide you prior to your arrival. They also organize buddy dinners with your 'buddy group' so you can socialize and meet more students. The International Office within CBS will be your main point of contact in regards to any exchange matters – they are incredibly helpful and nice!

If you're keen on travelling but want to travel with other exchange students of CBS, you're free to purchase any of the travel packages that CBS offers. I believe CBS organized trips to Berlin and around the rest of Denmark. I didn't join them but I heard it was good fun if you prefer a more guided tour.

Courses Registration

CBS has a very straight forward and easy to use online system for course registration where you simply select 4 courses (7.5 ECTS each) and put in your first and second choices for each selection. You will then be informed of the classes you have been successfully registered in. One word of advice is that unlike UST's class enrollment system, it will not display whether or not classes clash or not. Schedules of courses are released much later after class enrollment confirmation so be sure to double check if your classes clash and then make adjustments accordingly. I ended up with 1 class clashing for over 10 classes but I took it anyway simply because it was impossible to find another class that fit my schedule. I did, however, have a friend who took that class who would relay any important information to me.

Teaching & Assessment Methods

Class sizes can vary in CBS much like UST but tend to be much smaller, as such, provides many more opportunities for students to actively participate and discuss concepts in class. There are a few different types of exams but the majority is in the form of a digital exam where you sit in an exam hall full of computers and type out your answer. A popular examination method is to submit a written report and then have an oral examination based on that report – something very unique to CBS.

Sports and Recreation Facilities

I'm not too familiar with any sport facilities at CBS. From my knowledge there is no school gym and many students sign up for gym memberships at nearby facilities. Aside from the canteen, there is a small coffee shop in the main campus that hosts parties and gatherings on campus.

Finance & Banking

Many students used their international credit cards for expenses which is incredibly convenient but can be a little pricey. After receiving my CPR number, I registered for a bank account and debit card at Nordea Bank in Denmark. The registration procedure takes less than an hour so long as you have all the necessary documentation.

One thing to taken to take note of is that Denmark is an area with incredibly high living cost. It is, therefore, very important to manage your expenses carefully. Eating out will burn through the cash in your wallet very quickly. As I lived in a flat off campus, I found cooking for myself and packing my own lunch are much more affordable. Transport can also be pretty pricey if you do not have a rejeskort (if you plan to take public transport). If you know how to ride a bike, I would recommend saving on your transportation costs by purchasing a second hand bike.

Social Clubs & Networking Activities

There are many clubs you can join at CBS for a small membership fee, depending on your interests. There was a fair held on the main campus introducing all the activities available (like UST) during the start of the semester.

Health & Safety

Denmark is generally a very safe place to live and study. All students who register for their CPR number are also offered health insurance so do take a look into that after you've applied. Regardless of where you are in Europe, I would recommend being sensible and taking care of your personal belongings.

Food

Copenhagen has a good mix of local Danish food and food from other regions. Although eating out tends to be quite pricey, I would really recommend popping by Copenhagen Street Food on Paper Island for some food. If you're craving Asian food they have a really good Korean fried chicken shop! Copenhagen is also home to Noma – an incredibly famous two-Michelin star restaurant – though I have heard they are relocating elsewhere. If you have the chance (and the budget), I'd recommend having a meal there!

Transportation

The public transportation system is somewhat similar to the one in HK in the sense that they use a rejsekort (like an Octopus card) – but can be quite expensive as they charge by 'zones' instead of 'stops/stations'. I would recommend purchasing a second-hand bike and relying on it for your main means of transportation if you are a good biker.

Climate

The weather is quite nice but can get cold later on as winter season approaches. During the later months of the year it tends to get quite windy and rainy with the sun setting at an early time. If you're not used to the colder weather, I would recommend bringing thicker clothes and wear layers of clothes – staying warm is more important than staying fashionable. Remember to bring gloves if you will be biking. It can get quite windy while you bike and can be painful for your fingers.

Communication

Upon arrival (and after meeting your exchange buddy), CBS will provide you with a free sim card from Lebara. The sim card has a very small balance so you will have to top up from 7-11; I would recommend purchasing the 99dkk 30GB monthly plan from Lebara (as opposed to topping up set amounts of cash each time).

Cautionary Measures

Copenhagen is an incredible place to study at so just make sure you stay safe and have fun. If you're biking, pay attention to the rules on the road and other cyclists and cars – sometimes buses and cars will drive in the bike lane so just make sure you're being seen!

ITEMS TO BRING: CHECKLIST

- ✓ Clothes (particularly a thick jacket/warmer clothes for the colder weather)
- ✓ Daily necessities (personal items, make up, skin care etc.)
- ✓ Electronic devices (laptop, camera, phone + chargers + adapters)
- ✓ Electrical outlet with multiple sockets
- ✓ Medicine
- ✓ Credit card/sufficient cash
- ✓ Backpack/ day bag
- ✓ Bed sheets/pillows (if you're not living in the dorms)
- ✓ Notebooks & stationary
- ✓ USB (*very important* for open book digital exams)
- ✓ Passport & ID & visa related information

USEFUL LINKS AND CONTACTS

CBS International Office

Dalgas Have 15, 2nd floor, West Wing, Room 2V.020, 2000, Frediksberg

Tel: +45 3815 3006

Email: rec.intoff@cbs.dk

Danish Emergency Helpline (akuttelefonen)

Tel: +45 1813

Open 24/7 for sudden illness/injury

Danish Emergency Line

Tel: +45 112

For acute, life threatening illness/injury, fire or police service

Danish Non Urgent Police Assistance Line

Tel: +45 114

** There is a large police station at Copenhagen Central Station – useful for reporting any incidences of theft.

If you'd like any more information, please feel free to reach out to me by contacting the SBM Exchange Team at bmugexch@ust.hk.