



CASS BUSINESS SCHOOL CITY UNIVERSITY LONDON

2017 Fall Exchange

Tsang Suet Yee Shirley

Information Systems and Finance (Year 3)

PART 1 - MONTHLY ACTIVITY LOG

September

I arrived London in late September, but I had a trip to Morocco, Portugal and Spain before arrival. Instead of living in dormitory, I had a room in a homestay in Zone 3, which was 45 minutes from school. I skipped the optional orientation days because of my trip, so I met other exchange students from Hong Kong on the welcome day. In the first week, I settled down and went shopping for clothes and necessities at Oxford Street.



October

School started in October. The most attractive thing of CASS was that they offered free language classes. Therefore, apart from finance lectures, I had Spanish lessons with other exchange students too. As I studied Performing Arts in London, I watched a Shakespeare play and a ballet performance, which were quite special. When I was free, I would also join the tours of the Historic London even though I did not register for it. But the time for me visit London attractions was when my Hong Kong friends came and asked me to show around. After a few weeks of gathering in school and at dorm, I travelled to Bath, Oxford and Edinburgh with the foreigner students too.



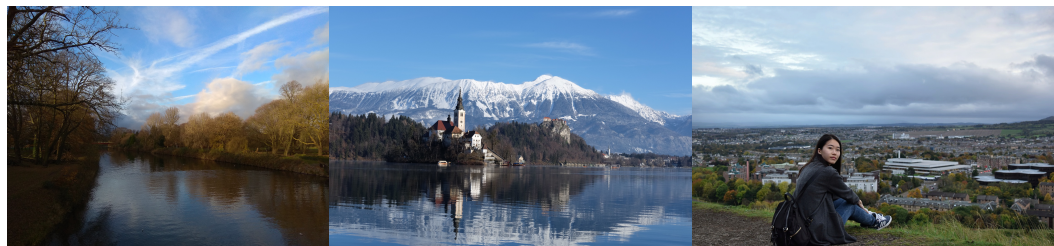
November

This month was full of trips to Dublin, Amsterdam and Glasgow, but it came with presentations, assignments and examinations too. The mid-term period was pretty late in week 8 (11 teaching week in total). As a result, it was really a struggle between playing around and studying. After that, we celebrated with hot pots and “international dinners” with everyone bringing their home cooking. And I watched six more performances too. Although I was totally not interested in musicals at first, I would now recommend everyone to try them in London, especially for “The Book of Mormon”.



December

I went for a football match at Wembley Stadium. Unfortunately, it was an unhappy experience as I got vomited all over my body by a drunk man behind during the match. Other than that, I still had a joyful time in Cardiff and Slovenia before the semester ended. Starting from mid-December, I was busy with early exams and I finished some alternative assessments in the coming trips. Later, I went to Germany, Czech and Belgium.



PART 2 - GENERAL EXCHANGE INFORMATION

I. Visa Procedures

As a Hong Kong passport holder, you are not required to apply for a visa as long as your duration is less than 180 days. However, you will always need to provide the letter of acceptance from CASS, either letter or email, to enter as a student.

I had once fail to find the letter after a trip during the semester. Fortunately, I could still re-enter the U.K. as a traveller luckily after providing my student card, accommodation in London and the return flight ticket.

II. Orientation Activities

The orientation lasted for a week. Not all of the activities were compulsory. It was a good time to meet a brunch of new friends, but it was quite boring. It consisted of a few seminars, fairs and campus walks. In addition, the school offered an extra welcome party in a pub outside the campus for all new business students. It was the activities of the highest quality.

III. International Services & Activities

If you have any questions or problems regarding exchange, you can visit the CASS exchange office or contact your Student Exchange coordinator via email.

IV. Accommodations

The Liberty Hall is very convenience and enables you to keep connected to other students easily. However, the hall offered is limited, you may need to find your own accommodation, where it is pretty expensive in Central London. I rented a room from the London Homestays in Zone 3 and lived with a British family. It cost me 155 pounds/week for 12 weeks. You can definitely learn about the cultural difference, but there is a chance that you may not get along well with the host family too.

V. Courses Registration

The process for courses registration is easy. Before the registration, you can check for the available courses and timetable online, but you need to plan it by yourself as there is no timetable planner as UST. You will then be asked for your preference for quota-reserving purpose and do a further online registration later. You will make your final decision during the add/drop period.

VI. Teaching & Assessment Methods

There is a 2-hour lecture for each course and some may also include tutorials. You can check the details from Moodle, which is the CASS version of Canvas. To get a pass, you have to get 40% in EACH assessment area.

Course	UST Equivalence	Assessment Methods
IF3108 Corporate Finance	FINA 3303 Intermediate Corporate Finance	Mid-term Exam, Final Exam
BS3200 International Financial Management	FINA 4403 International Finance	Presentations, Alternative Assessment (Case Study)
LA2017 Performing Arts in London (£50 for 5 performance)	HMCC UCORE Common Core Course in Humanities	Presentation, Final Exam (Essay)
AF2101 Financial Accounting	-	Assignments, Mid-term Exam, Alternative Assessment (Essay)
LA0025 Extracurricular Business Spanish Beginner (Registered separately)	-	Final Exam (Open-book)

VII. Sports & Recreation Facilities

There is a sport centre called CitySport. You can purchase a membership and join different sports classes, such as tennis balls, yoga and dance.

VIII. Finance & Banking

To open a bank account, you have to book in advance and you may need to wait nearly a month, so I would not suggest people to open accounts. Instead, credit cards are mainly used. You can also withdraw cash in UK using Barclays Bank's ATM, which supports UnionPay.

Items	HKD	GBP
Flight	7,200	
Food	10,000	960
Accommodation	22,000	2,100
Transportation	3,500	330
Phone Plan	700	65
Travel	37,000	3,550
Miscellaneous	4,600	440
Total	85,000	

IX. Social Clubs & Networking Opportunities

If you go on exchange in Fall semester, there will be a Freshers' Fair during the orientation. You can choose from a wide variety of clubs and societies.

X. Health & Safety

If you have health matters, you can visit a Student Health Service Center in campus. London is pretty safe. However, there are some people approach you and try to talk to you with Chinese, Japanese and Korean if you are an Asian. Just stay alert when going out at night and be aware of your properties.

XI. Food

Food in City University is just so-so, but I would still recommend you visit CityBar in campus. It is a good place for gathering and they have cheaper meal sets. There are a lot of food options near Angel station, the closest station to school. You can also visit China Town for Asian food and drinks. However, if you want cheap food, it is better to shop in supermarkets, such as Tesco and Sainsbury's.

XII. Transportation

To take trains, tubes or buses, you will need Oyster card, which can be brought from any tube station. Meanwhile, you should also apply for 16-25 Railcard, which will give you a 1/3 off discount for fares and daily caps. You can link it to your oyster card with the help of the staff in tube stations. Besides, you can take a second bus journey for free within an hour. In addition, the main transportation apps in London is CityMapper and Google Map.

XIII. Climate

London is always rainy, but you will only need a hooded coat for most of the time. It is much warmer than other places in Europe. It snows once or twice every year. However, the sun set starts as early as at 4pm in winter time.

XIV. Communication

If you just want a phone plan for the U.K., giffgaff would be the best choice. However, if you travel a lot and need service for the whole Europe, you can choose providers such as EE and 3UK. They offer 30 days plan with 12GB data for around £20 and provide you with free wifi in tube stations as well. But EE has better signals in general.

PART 3 - ITEMS TO BRING

- ☐ Acceptance Letter
- ☐ UK SIM card (e.g. EE, 3UK, Vodafone), Hong Kong SIM card (with international roaming) (for online payment using credit card)
- ☐ Cash (GBP & EUR), credit cards (UnionPay is NOT widely accepted)
- ☐ Laptops, Camera, Chargers
- ☐ Small suitcase, all-in-one adaptor, pad lock (for travelling)
- ☐ Hats, gloves, scarfs, warm clothes, down jackets, umbrella
- ☐ Medicines
- ☐ Tableware, bowls, dishes, pots, electric kettle (You can also purchase them after your arrival)
- ☐ Toiletries, towels
- ☐ Stationary

PART 4 - USEFUL LINKS AND CONTACTS

- ☐ CASS Undergraduate Modules
<https://www.cass.city.ac.uk/student-intranet/your-academic-journey/modules>
- ☐ Railcard (Please also search for discount code online. You may be able to get up to £5 discount.)
<https://www.railcard.co.uk/>
- ☐ CityMapper
<https://citymapper.com/london>
- ☐ London Homestays
<http://londonhomestays.com/>
- ☐ Lok'nStore (near Gatwick Airport) (for luggage storage during travel)
<https://www.loknstore.co.uk/>

If you would like to know more about my exchange, please feel free to get my contact from the SBM team.